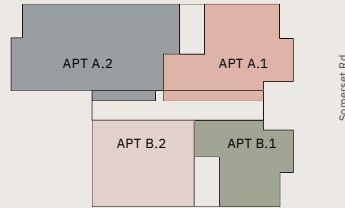


# FLOOR PLANS

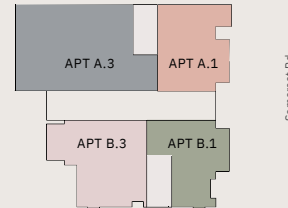
**Disclaimer:** All pictures, plans, layouts, information, data and details included in this brochure are indicative only and may change at any time up to the final 'as built' status in accordance with final designs of the project, regulatory approvals and planning permissions. All accessories and interior finishes such as wallpaper, chandeliers, furniture, electronics, white goods, curtains, hard and soft landscaping, pavements, features, gym, swimming pool(s) and other elements displayed in the brochure, or between the plot boundary and the unit, are not part of the unit and are shown for illustrative purposes only.

## LOWER GROUND



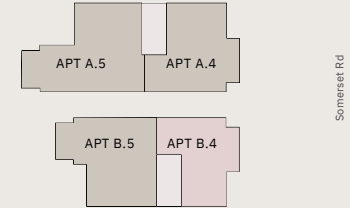
Apt	Bedrooms	Gross Internal Area
no A.1	3 Duplex	1,258 sq ft / 116.9 sq m
A.2	3	1,016 sq ft / 94.4 sq m
B.1	2 Duplex	1,031 sq ft / 95.8 sq m
B.2	1	648 sq ft / 60.2 sq m

## GROUND FLOOR



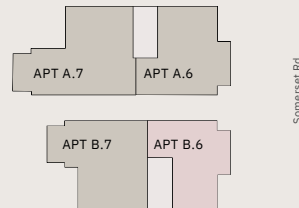
Apt	Bedrooms	Gross Internal Area
no A.1	-	-
A.3	3	927 sq ft / 86.1 sq m
B.1	-	-
B.3	1	565 sq ft / 52.5 sq m

## FIRST FLOOR



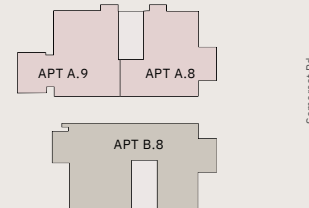
Apt	Bedrooms	Gross Internal Area
no A.4	2	647 sq ft / 60.1 sq m
A.5	2	747 sq ft / 69.4 sq m
B.4	1	527 sq ft / 49 sq m
B.5	2	654 sq ft / 60.8 sq m

## SECOND FLOOR



Apt	Bedrooms	Gross Internal Area
no A.6	2	647 sq ft / 60.1 sq m
A.7	2	747 sq ft / 69.4 sq m
B.6	1	529 sq ft / 49.1 sq m
B.7	2	658 sq ft / 61.1 sq m

## THIRD FLOOR



Apt	Bedrooms	Gross Internal Area
no A.8	1	507 sq ft / 47.1 sq m
A.9	1	518 sq ft / 48.1 sq m
B.8	2	917 sq ft / 85.2 sq m

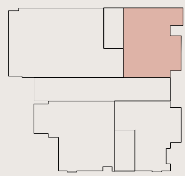
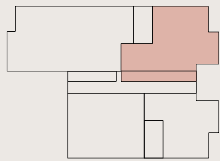
- 1 Bedroom
- 2 Bedrooms
- 2 Bedrooms Duplex
- 3 Bedrooms
- 3 Bedrooms Duplex

Disclaimer: All pictures, plans, layouts, information, data and details included in this brochure are indicative only and may change at any time up to the final 'as built' status in accordance with final designs of the project, regulatory approvals and planning permissions. All accessories and interior finishes such as wallpaper, chandeliers, furniture, electronics, white goods, curtains, hard and soft landscaping, pavements, features, gym, swimming pool(s) and other elements displayed in the brochure, or within the show apartment or between the plot boundary and the unit, are not part of the unit and are shown for illustrative purposes only.

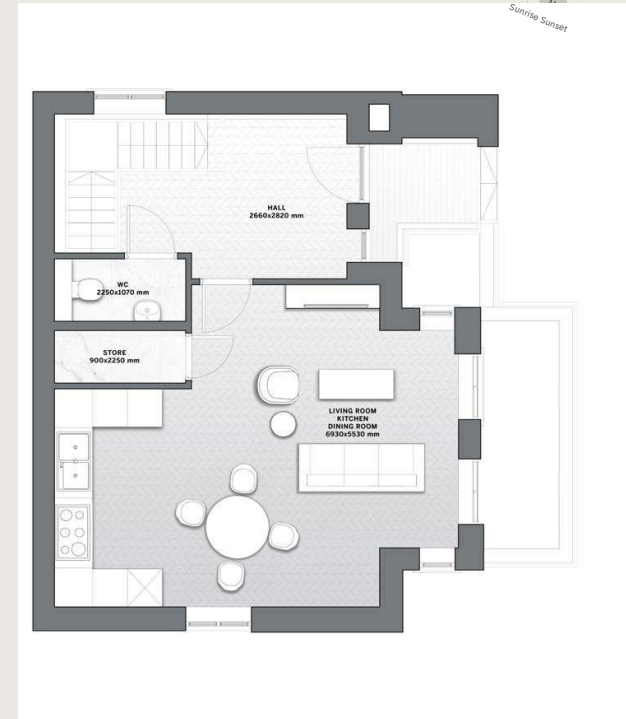
BUILDING A  
**LOWER GROUND  
GROUND FLOOR**

**APT No. A.1  
3-BEDROOMS DUPLEX**

**1,258 SQ FT / 116.9 SQ  
M EXCLUDING TERRACE**



LOWER GROUND



GROUND FLOOR

**Disclaimer:** All pictures, plans, layouts, information, data and details included in this brochure are indicative only and may change at any time up to the final 'as built' status in accordance with final designs of the project, regulatory approvals and planning permissions. All accessories and interior finishes such as wallpaper, chandeliers, furniture, electronics, white goods, curtains, hard and soft landscaping, pavements, features, gym, swimming pool(s) and other elements displayed in the brochure, or within the show apartment or between the plot boundary and the unit, are not part of the unit and are shown for illustrative purposes only.

---

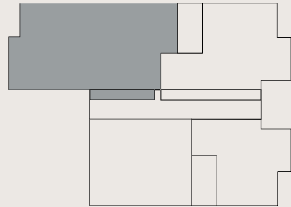
BUILDING A  
**LOWER GROUND**

---

APT No. A.2  
**3-BEDROOMS**

**1,016 SQ FT / 94.4 SQ M**  
EXCLUDING TERRACE

---



**Disclaimer:** All pictures, plans, layouts, information, data and details included in this brochure are indicative only and may change at any time up to the final 'as built' status in accordance with final designs of the project, regulatory approvals and planning permissions. All accessories and interior finishes such as wallpaper, chandeliers, furniture, electronics, white goods, curtains, hard and soft landscaping, pavements, features, gym, swimming pool(s) and other elements displayed in the brochure, or within the show apartment or between the plot boundary and the unit, are not part of the unit and are shown for illustrative purposes only.

---

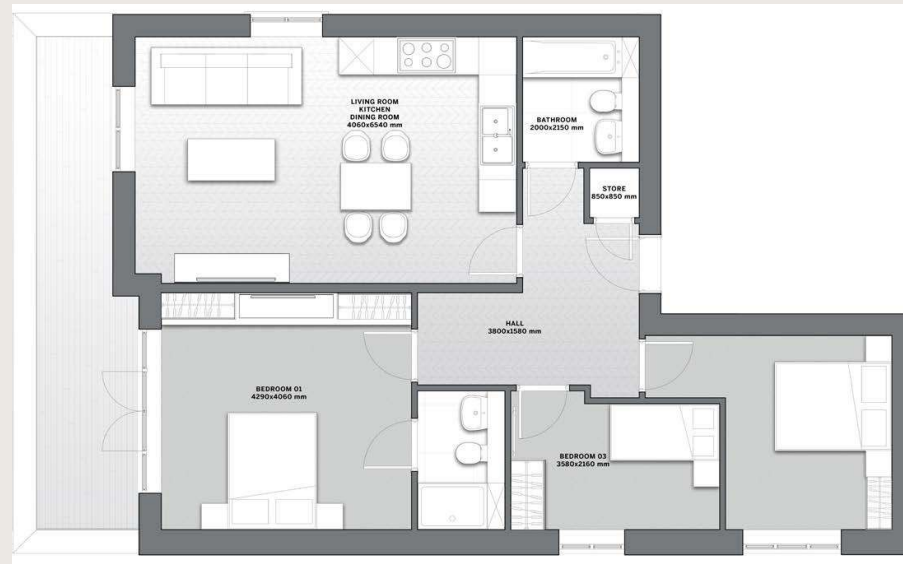
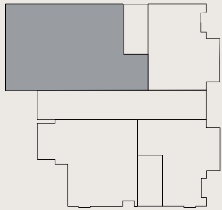
BUILDING A  
**GROUND FLOOR**

---

APT No. A.3  
**3-BEDROOMS**

**927 SQ FT / 86.1 SQ M**  
EXCLUDING TERRACE

---



**Disclaimer:** All pictures, plans, layouts, information, data and details included in this brochure are indicative only and may change at any time up to the final 'as built' status in accordance with final designs of the project, regulatory approvals and planning permissions. All accessories and interior finishes such as wallpaper, chandeliers, furniture, electronics, white goods, curtains, hard and soft landscaping, pavements, features, gym, swimming pool(s) and other elements displayed in the brochure, or within the show apartment or between the plot boundary and the unit, are not part of the unit and are shown for illustrative purposes only.

---

BUILDING A  
**FIRST FLOOR**

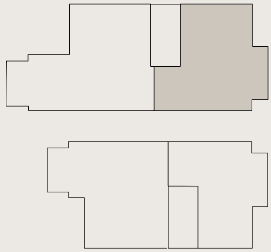
---

APT No. A.4  
**2-BEDROOMS**

---

647 SQ FT / 60.1 SQ M

---



**Disclaimer:** All pictures, plans, layouts, information, data and details included in this brochure are indicative only and may change at any time up to the final 'as built' status in accordance with final designs of the project, regulatory approvals and planning permissions. All accessories and interior finishes such as wallpaper, chandeliers, furniture, electronics, white goods, curtains, hard and soft landscaping, pavements, features, gym, swimming pool(s) and other elements displayed in the brochure, or within the show apartment or between the plot boundary and the unit, are not part of the unit and are shown for illustrative purposes only.

---

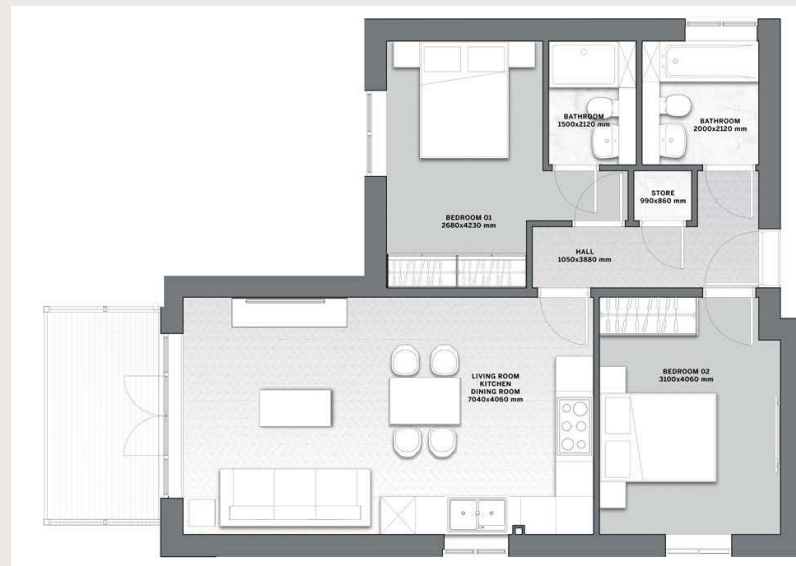
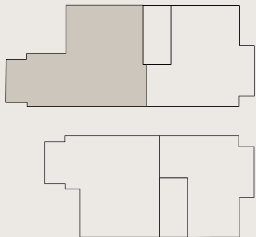
BUILDING A  
**FIRST FLOOR**

---

APT No. A.5  
**2-BEDROOMS**

**747 SQ FT / 69.4 SQ M**  
EXCLUDING BALCONY

---



**Disclaimer:** All pictures, plans, layouts, information, data and details included in this brochure are indicative only and may change at any time up to the final 'as built' status in accordance with final designs of the project, regulatory approvals and planning permissions. All accessories and interior finishes such as wallpaper, chandeliers, furniture, electronics, white goods, curtains, hard and soft landscaping, pavements, features, gym, swimming pool(s) and other elements displayed in the brochure, or within the show apartment or between the plot boundary and the unit, are not part of the unit and are shown for illustrative purposes only.

---

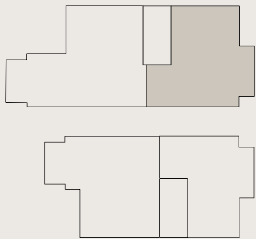
BUILDING A  
**SECOND FLOOR**

---

APT No. A.6  
**2-BEDROOMS**

647 SQ FT / 60.1 SQ M

---



**Disclaimer:** All pictures, plans, layouts, information, data and details included in this brochure are indicative only and may change at any time up to the final 'as built' status in accordance with final designs of the project, regulatory approvals and planning permissions. All accessories and interior finishes such as wallpaper, chandeliers, furniture, electronics, white goods, curtains, hard and soft landscaping, pavements, features, gym, swimming pool(s) and other elements displayed in the brochure, or within the show apartment or between the plot boundary and the unit, are not part of the unit and are shown for illustrative purposes only.



---

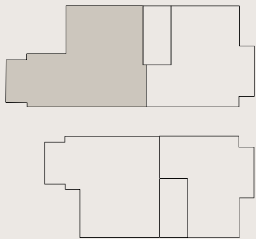
BUILDING A  
**SECOND FLOOR**

---

APT No. A.7  
**2-BEDROOMS**

**747 SQ FT / 69.4 SQ M**  
EXCLUDING BALCONY

---



**Disclaimer:** All pictures, plans, layouts, information, data and details included in this brochure are indicative only and may change at any time up to the final 'as built' status in accordance with final designs of the project, regulatory approvals and planning permissions. All accessories and interior finishes such as wallpaper, chandeliers, furniture, electronics, white goods, curtains, hard and soft landscaping, pavements, features, gym, swimming pool(s) and other elements displayed in the brochure, or within the show apartment or between the plot boundary and the unit, are not part of the unit and are shown for illustrative purposes only.

---

BUILDING A  
**THIRD FLOOR**

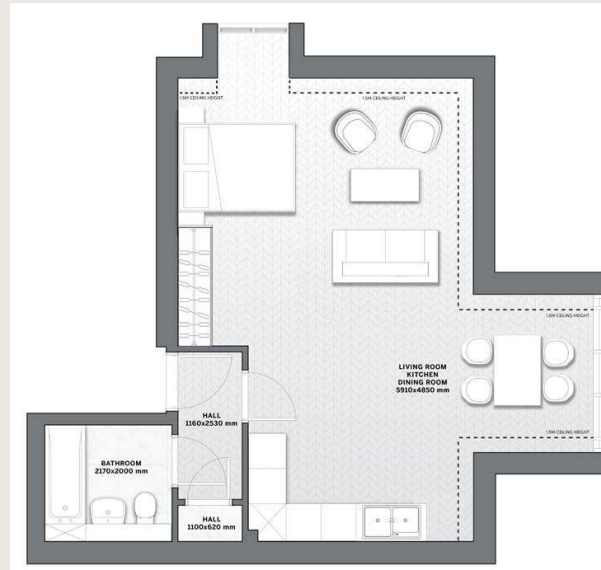
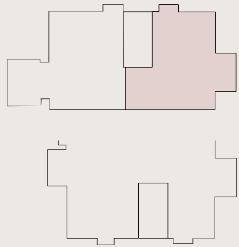
---

APT No. A.8  
**1-BEDROOM**

---

507 SQ FT / 47.1 SQ M

---



**Disclaimer:** All pictures, plans, layouts, information, data and details included in this brochure are indicative only and may change at any time up to the final 'as built' status in accordance with final designs of the project, regulatory approvals and planning permissions. All accessories and interior finishes such as wallpaper, chandeliers, furniture, electronics, white goods, curtains, hard and soft landscaping, pavements, features, gym, swimming pool(s) and other elements displayed in the brochure, or within the show apartment or between the plot boundary and the unit, are not part of the unit and are shown for illustrative purposes only.

---

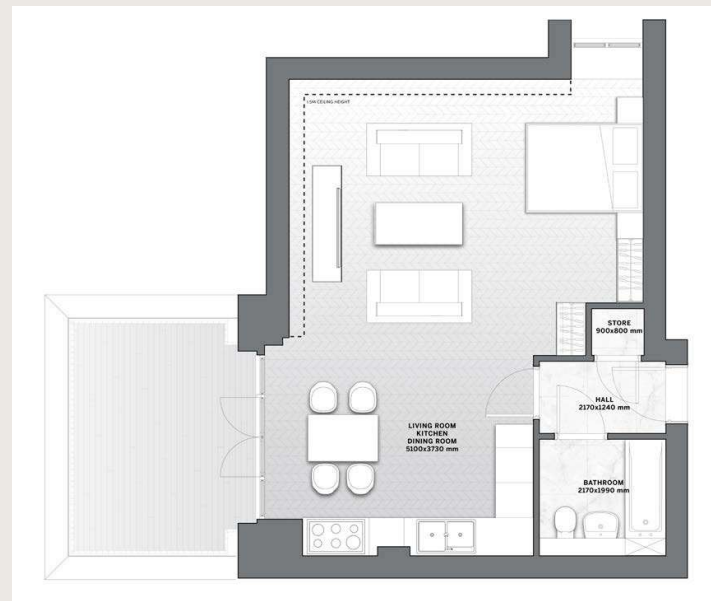
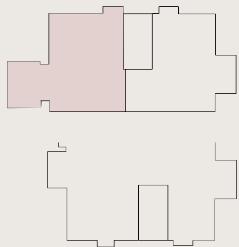
BUILDING A  
**THIRD FLOOR**

---

APT No. A.9  
**1-BEDROOM**

**518 SQ FT / 48.1 SQ M**  
EXCLUDING TERRACE

---



**Disclaimer:** All pictures, plans, layouts, information, data and details included in this brochure are indicative only and may change at any time up to the final 'as built' status in accordance with final designs of the project, regulatory approvals and planning permissions. All accessories and interior finishes such as wallpaper, chandeliers, furniture, electronics, white goods, curtains, hard and soft landscaping, pavements, features, gym, swimming pool(s) and other elements displayed in the brochure, or within the show apartment or between the plot boundary and the unit, are not part of the unit and are shown for illustrative purposes only.

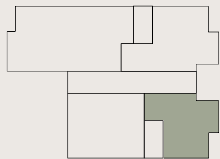
BUILDING B

**LOWER GROUND  
GROUND FLOOR**

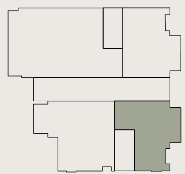
APT No. B.1

**2-BEDROOMS DUPLEX**

**1,031 SQ FT / 95.8 SQ M**  
EXCLUDING TERRACE



LOWER GROUND



GROUND FLOOR

**Disclaimer:** All pictures, plans, layouts, information, data and details included in this brochure are indicative only and may change at any time up to the final 'as built' status in accordance with final designs of the project, regulatory approvals and planning permissions. All accessories and interior finishes such as wallpaper, chandeliers, furniture, electronics, white goods, curtains, hard and soft landscaping, pavements, features, gym, swimming pool(s) and other elements displayed in the brochure, or within the show apartment or between the plot boundary and the unit, are not part of the unit and are shown for illustrative purposes only.



LOWER GROUND



GROUND FLOOR

---

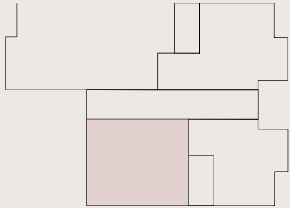
BUILDING B  
**LOWER GROUND**

---

APT No. B.2  
**1-BEDROOM**

**648 SQ FT / 60.2 SQ M**  
EXCLUDING TERRACE

---



**Disclaimer:** All pictures, plans, layouts, information, data and details included in this brochure are indicative only and may change at any time up to the final 'as built' status in accordance with final designs of the project, regulatory approvals and planning permissions. All accessories and interior finishes such as wallpaper, chandeliers, furniture, electronics, white goods, curtains, hard and soft landscaping, pavements, features, gym, swimming pool(s) and other elements displayed in the brochure, or within the show apartment or between the plot boundary and the unit, are not part of the unit and are shown for illustrative purposes only.

---

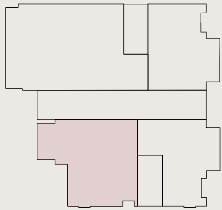
BUILDING B  
**GROUND FLOOR**

---

APT No. B.3  
**1-BEDROOM**

565 SQ FT / 52.5 SQ M  
EXCLUDING BALCONY

---



**Disclaimer:** All pictures, plans, layouts, information, data and details included in this brochure are indicative only and may change at any time up to the final 'as built' status in accordance with final designs of the project, regulatory approvals and planning permissions. All accessories and interior finishes such as wallpaper, chandeliers, furniture, electronics, white goods, curtains, hard and soft landscaping, pavements, features, gym, swimming pool(s) and other elements displayed in the brochure, or within the show apartment or between the plot boundary and the unit, are not part of the unit and are shown for illustrative purposes only.

---

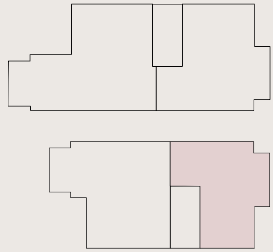
BUILDING B  
**FIRST FLOOR**

---

APT No. B.4  
**1-BEDROOM**

527 SQ FT / 49 SQ M

---



**Disclaimer:** All pictures, plans, layouts, information, data and details included in this brochure are indicative only and may change at any time up to the final 'as built' status in accordance with final designs of the project, regulatory approvals and planning permissions. All accessories and interior finishes such as wallpaper, chandeliers, furniture, electronics, white goods, curtains, hard and soft landscaping, pavements, features, gym, swimming pool(s) and other elements displayed in the brochure, or within the show apartment or between the plot boundary and the unit, are not part of the unit and are shown for illustrative purposes only.

---

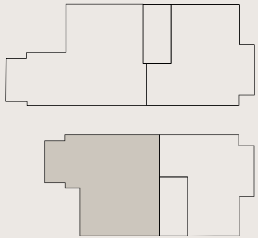
BUILDING B  
**FIRST FLOOR**

---

APT No. B.5  
**2-BEDROOMS**

**654 SQ FT / 60.8 SQ M**  
EXCLUDING BALCONY

---



**Disclaimer:** All pictures, plans, layouts, information, data and details included in this brochure are indicative only and may change at any time up to the final 'as built' status in accordance with final designs of the project, regulatory approvals and planning permissions. All accessories and interior finishes such as wallpaper, chandeliers, furniture, electronics, white goods, curtains, hard and soft landscaping, pavements, features, gym, swimming pool(s) and other elements displayed in the brochure, or within the show apartment or between the plot boundary and the unit, are not part of the unit and are shown for illustrative purposes only.



---

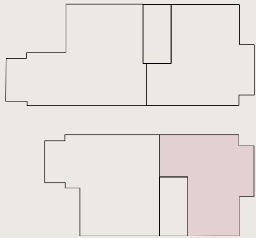
BUILDING B  
**SECOND FLOOR**

---

APT No. B.6  
**2-BEDROOMS**

529 SQ FT / 49.1 SQ M

---



**Disclaimer:** All pictures, plans, layouts, information, data and details included in this brochure are indicative only and may change at any time up to the final 'as built' status in accordance with final designs of the project, regulatory approvals and planning permissions. All accessories and interior finishes such as wallpaper, chandeliers, furniture, electronics, white goods, curtains, hard and soft landscaping, pavements, features, gym, swimming pool(s) and other elements displayed in the brochure, or within the show apartment or between the plot boundary and the unit, are not part of the unit and are shown for illustrative purposes only.

---

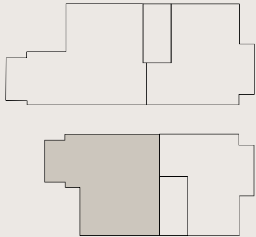
BUILDING B  
**SECOND FLOOR**

---

APT No. B.7  
**2-BEDROOMS**

**658 SQ FT / 61.1 SQ M**  
EXCLUDING BALCONY

---



**Disclaimer:** All pictures, plans, layouts, information, data and details included in this brochure are indicative only and may change at any time up to the final 'as built' status in accordance with final designs of the project, regulatory approvals and planning permissions. All accessories and interior finishes such as wallpaper, chandeliers, furniture, electronics, white goods, curtains, hard and soft landscaping, pavements, features, gym, swimming pool(s) and other elements displayed in the brochure, or within the show apartment or between the plot boundary and the unit, are not part of the unit and are shown for illustrative purposes only.

---

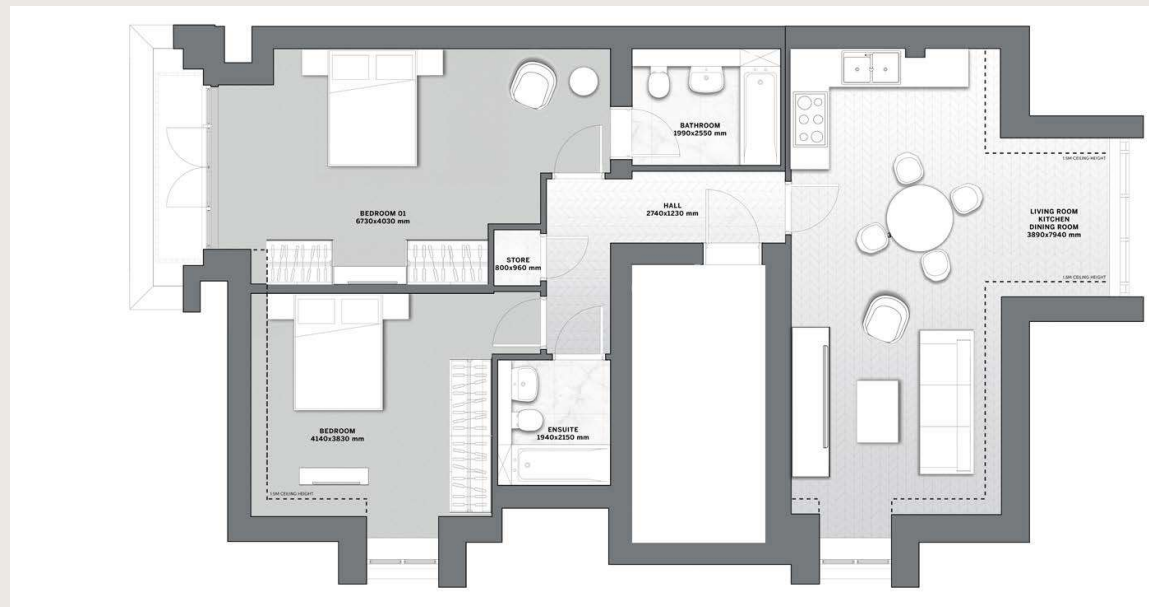
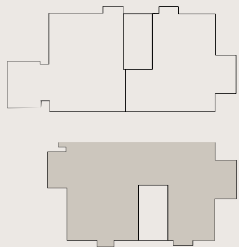
BUILDING B  
**THIRD FLOOR**

---

APT No. B.8  
**2-BEDROOMS**

**917 SQ FT / 85.2 SQ M**  
EXCLUDING TERRACE

---



**Disclaimer:** All pictures, plans, layouts, information, data and details included in this brochure are indicative only and may change at any time up to the final 'as built' status in accordance with final designs of the project, regulatory approvals and planning permissions. All accessories and interior finishes such as wallpaper, chandeliers, furniture, electronics, white goods, curtains, hard and soft landscaping, pavements, features, gym, swimming pool(s) and other elements displayed in the brochure, or within the show apartment or between the plot boundary and the unit, are not part of the unit and are shown for illustrative purposes only.